



The **BANFF**



4
BED



2.5
BATH



2
CAR

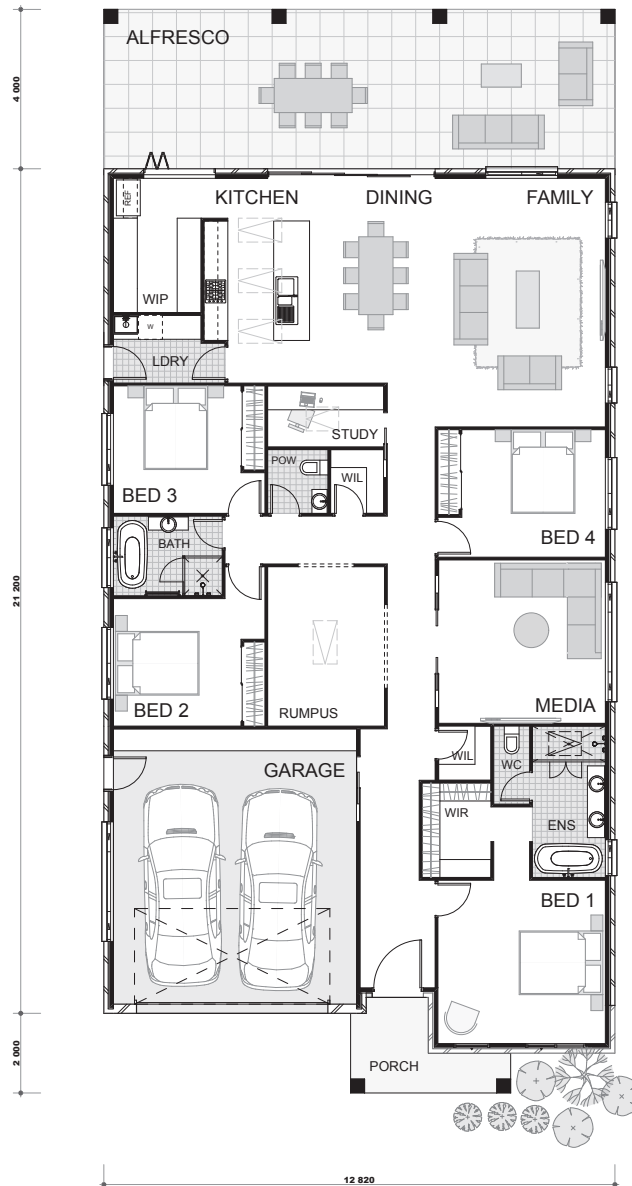
The Banff is a single storey design perfect for level sites with a 14.7 metre frontage or wider. The design is an entertainer's dream, with four bedrooms, three living areas and a modern kitchen that overlooks the open plan living and dining areas as well as the oversized alfresco.

The highlight of this home is the modern and functional fittings throughout the entire design. The galley style butlers pantry and Hamptons inspired kitchen is complimented by the raised ceilings and three Velux skylights giving the entire space additional light and sophistication. Boasting two walk in linen cupboards and additional optional garage storage, the Banff is never short on space.

The Master Suite is situated at the front of the design, giving you the ultimate retreat. The luxury ensuite contains a double basin, a deep bath, a lavish shower space with double shower heads and another skylight overhead for the ultimate experience.

The grand alfresco area spans the width of the house, giving you plenty of space for all your entertaining needs. The sliding doors open up through the open plan kitchen and dining areas, doubling your space. The Banff is the perfect design for families who love to host guests and entertain.

The FLOORPLAN



Garage: 45.27 m² | Living: 231.2 m² | Porch: 5.97 m² | Alfresco: 51.28 m²

IMPORTANT NOTICE: The Banff plan shown, scale: 1:100. Copyright[®]

All brochures, sketches & plans, whether conceptual or architectural that we have developed on your behalf remain the property of Lulamom Homes under copyright law & we retain & claim all rights to these plans. Despite popular belief, changing our plans by 50% or more does not avoid legal responsibility for a copyright breach. Artwork update: 31 / 07 / 2021